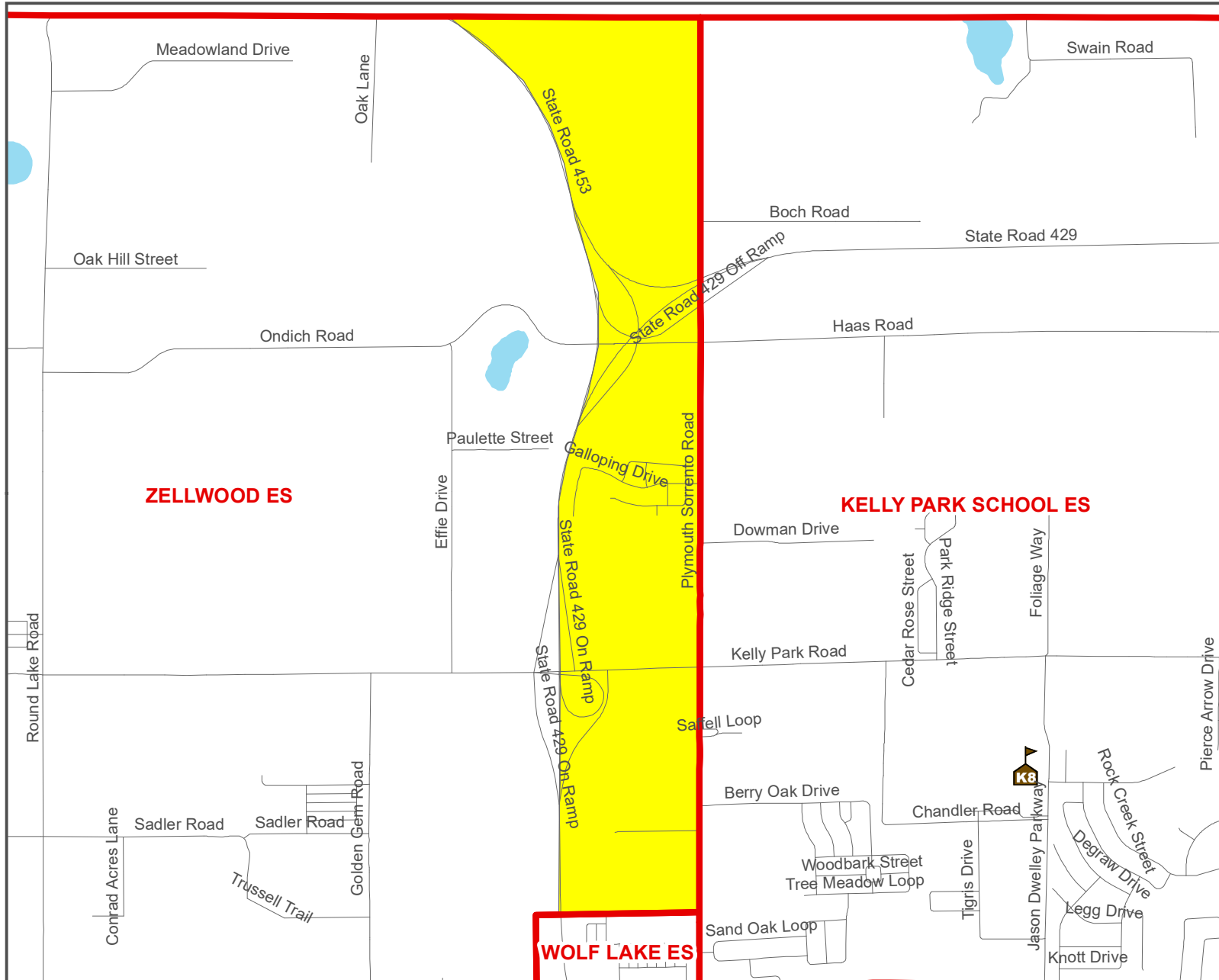








Kelly Park School Adjustment - ES- Board Approved



Legend

-  ES
-  K8
-  ES Zone
-  HYDRO

Section

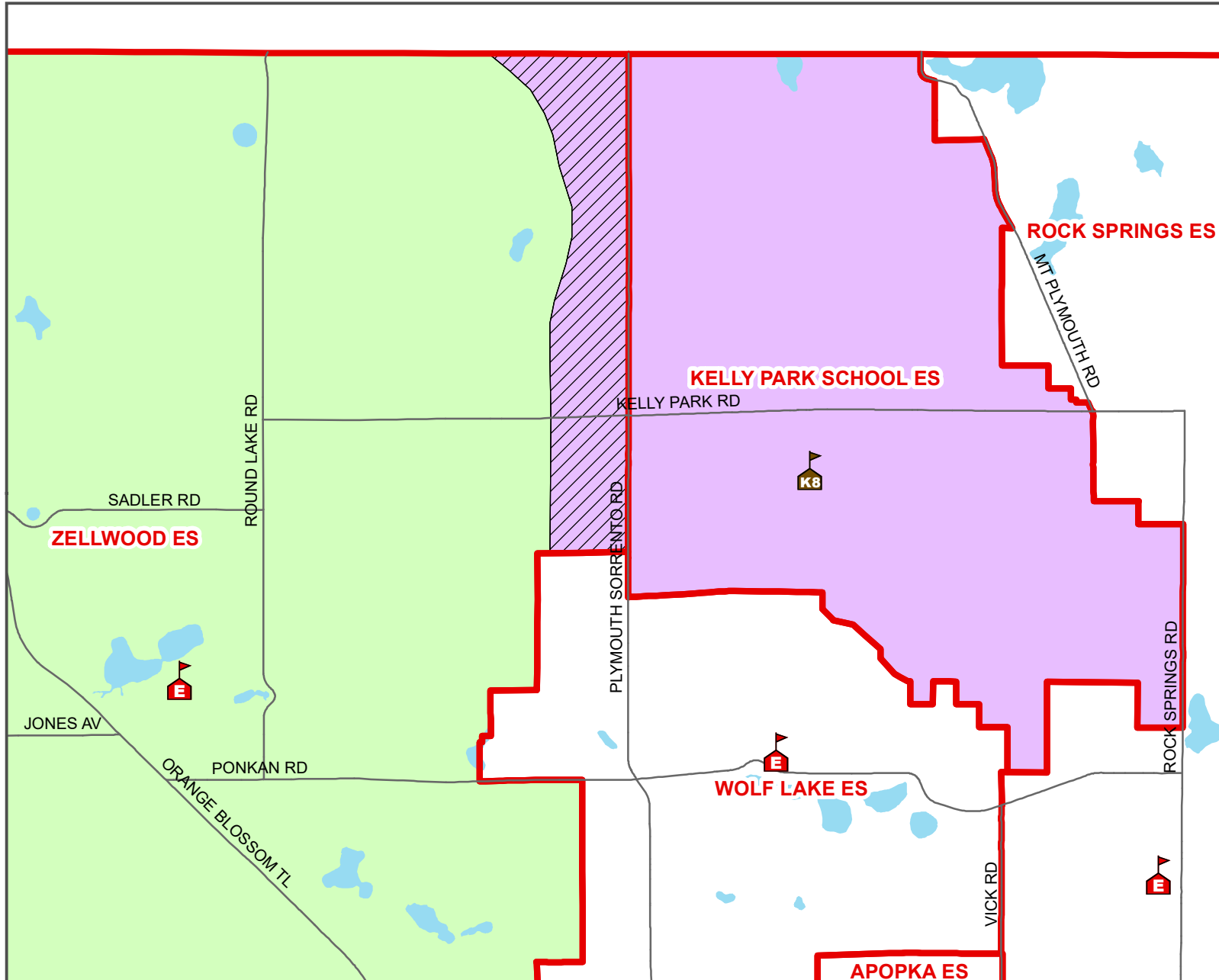
-  Targeted Area

The targeted area is currently zoned for Zellwood ES. There are 21 OCPS ES students residing in the targeted area.




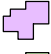

Recommendation: move targeted area from Zellwood ES to Kelly Park School to provide additional future enrollment for Kelly Park School.



Kelly Park School Adjustment - ES - Board Approved



Legend

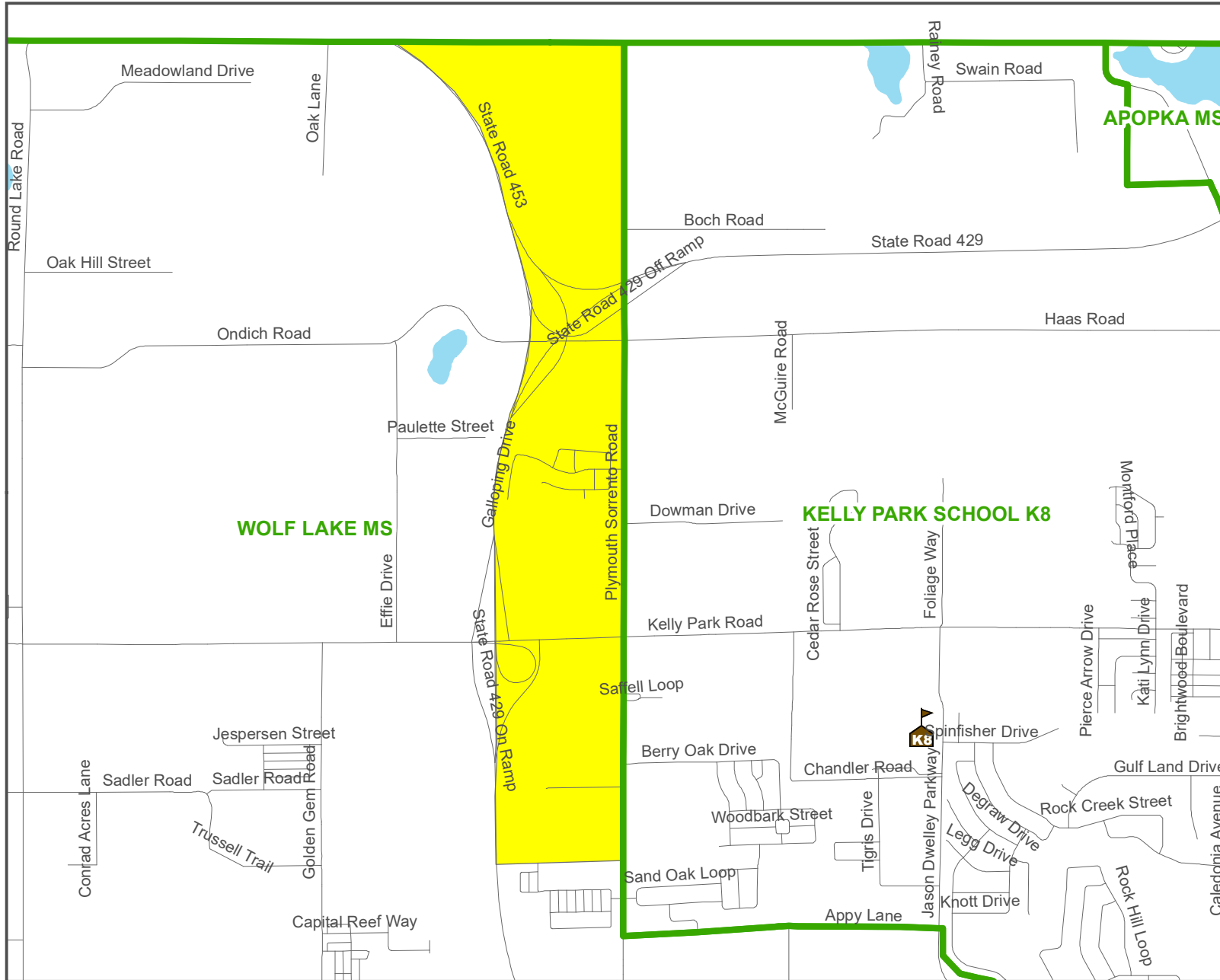
-  ES
 -  K8
 -  ES Zone
 -  HYDRO
 -  Targeted Area
- Proposed**
-  Kelly Park ES
 -  Zellwood ES

The targeted area is currently zoned for Zellwood ES. There are 21 OCPS ES students residing in the targeted area.





Recommendation: move targeted area from Zellwood ES to Kelly Park School to provide additional future enrollment for Kelly Park School.



Kelly Park School Adjustment - MS - Board Approved



Legend

-  K8
-  MS
-  MS Zones
-  HYDRO

Section

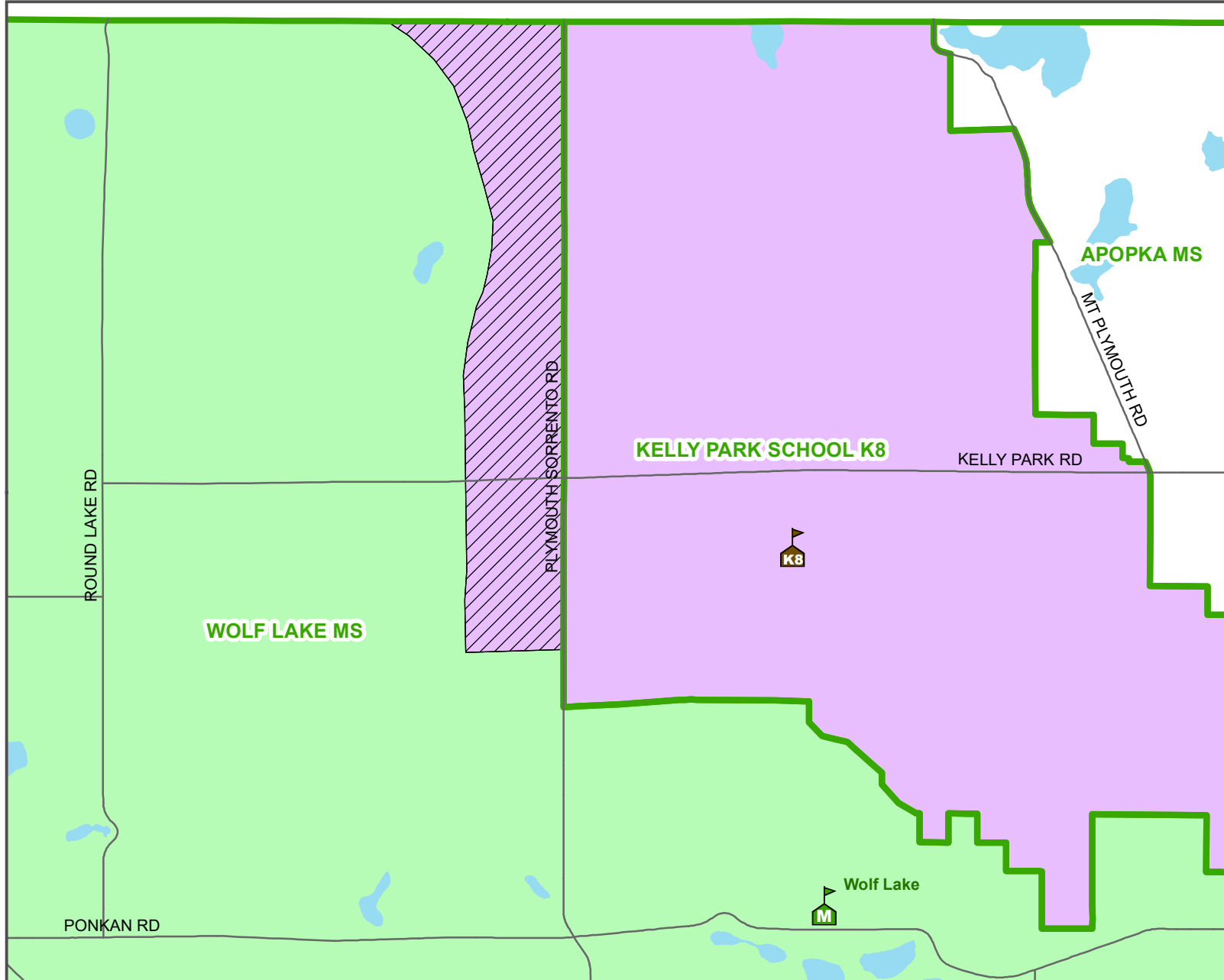
-  Targeted Area

The targeted area is currently zoned for Wolf Lake MS. There are 14 OCPS MS students residing in the targeted area.

Recommendation: move targeted area from Wolf Lake MS to Kelly Park School to reduce enrollment at Wolf Lake MS.



Kelly Park School Adjustment - MS - Board Approved



Legend

- K8
 - MS
 - MS Zones
 - HYDRO
 - Targeted Area
- Proposed**
- Kelly Park MS
 - Wolf Lake MS

The targeted area is currently zoned for Wolf Lake MS. There are 14 OCPS MS students residing in the targeted area.

Recommendation: move targeted area from Wolf Lake MS to Kelly Park School to reduce enrollment at Wolf Lake MS.



Kelly Park School Adjustment - Board Approved

School (Program Capacity)	Enrollment 10/17/2022 (%W/B/O) (%Non-H/H)	Current Number of Students Residing	Proposed Resides* (%W/B/O) (%Non-H/H) (Projected Students 2024**)	FARMS	ESE	ELL
				C: Current P: Proposed	C: Current P: Proposed	C: Current P: Proposed
Kelly Park School (1,248)	795 (68/24/8) (68/32)	961 591 ES 370 MS	996 612 ES 384 MS (70/25/5) (69/31)	C: 42% P: 41%	C: 16% P: 16%	C: 8% P: 8%
Wolf Lake MS (1,132)	1,195 (55/38/7) (70/30)	1,465	1,451 (55/41/4) (72/28)	C: 40% P: 40%	C: 17% P: 17%	C: 2% P: 2%
Zellwood ES (578)	493 (70/24/6) (49/51)	692	671 (70/26/4) (59/41)	C: 44% P: 45%	C: 14% P: 14%	C: 17% P: 17%
(2,958)	Total 2,483	Total 3,118	Total 3,118			

FARMS, ESE, & ELL numbers reflect students currently residing in these school zones

*Geo-coded students for the 2022-23 school year